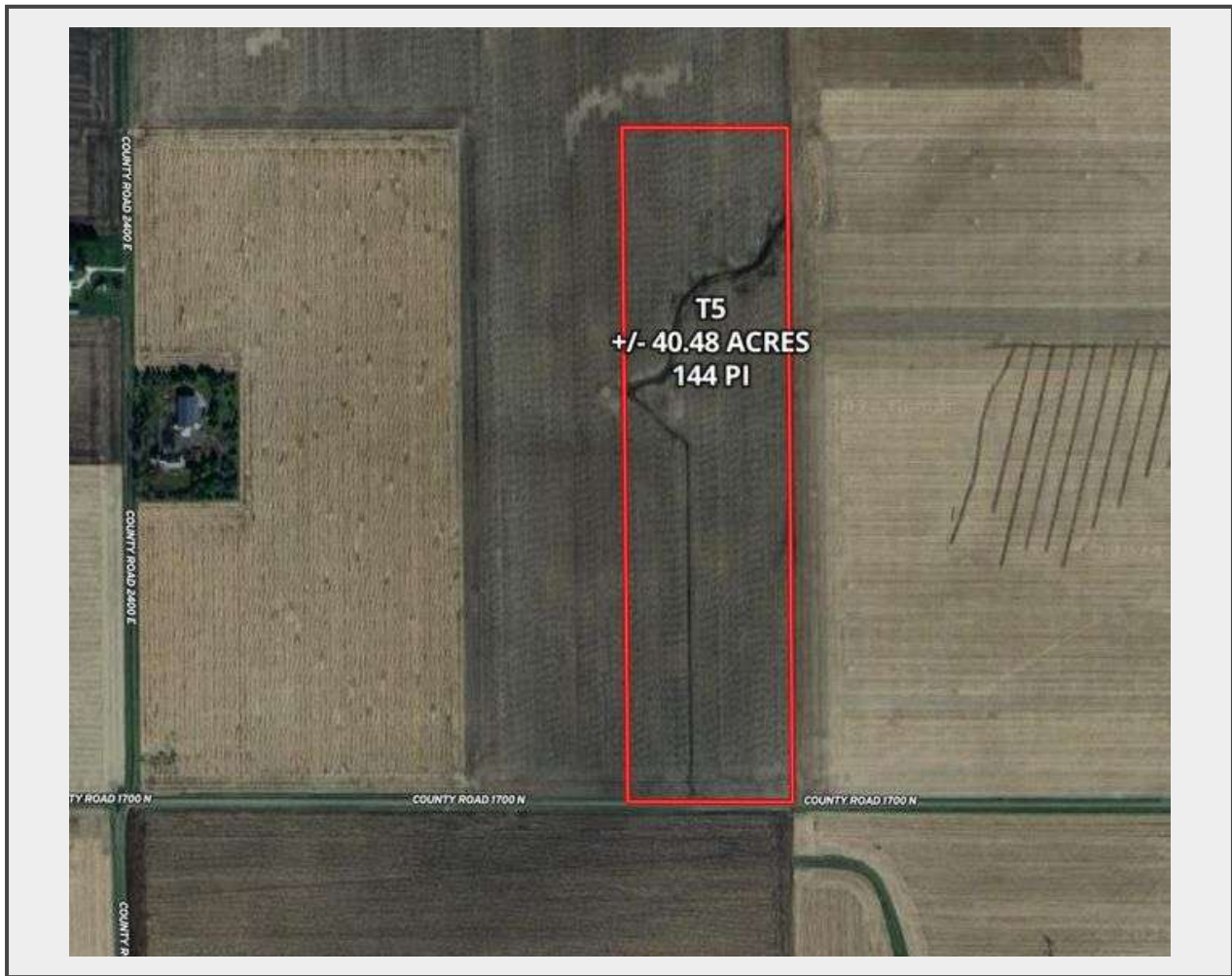


Sale Name: +/- 320.15 Acres, 5 Tracts, Clayton TWP. Woodford County, IL

LOT 5 - T5: +/- 40.48 acres



Description

T5: +/- 40.48 acres in total, +/- 40.10 tillable acres, 144 PI.
Part of section 35, T28N-R1E Clayton TWP. Woodford County, IL.
Parcel ID: 05-35-300-006. 2022 payable 2023 Real Estate Tax: \$2,565.72

Approved APH INFO:

T1 = 245 bushel corn, 73 bushel soybeans.
T2, T3, T4, T5 = 256 bushel corn; 75 bushel soybeans.

Buyer shall receive cash rent at closing in the amount of:
T1: \$20,811.00; T2: \$20,943.00; T3: \$21,502.00; T4: \$10,772.00; T5: \$10,772.00

The second cash rent payment will be paid to buyer on or before Dec 1, 2024 in the amount of:
T1: \$10,405.50; T2: \$10,471.50; T3: \$10,751.00; T4: \$5,386.00; T5: \$5,386.00

Farm is subject to a Wind Lease and Easement Agreement dated September 11, 2018 and memorandum of correction dated July 6, 2021.

Travis M. Selby
Land Broker and Auctioneer # 441001485

217.304.1686 cell
WWW.AGEXCHANGE.COM

Quantity: 1



<https://bid.agexchange.com/>