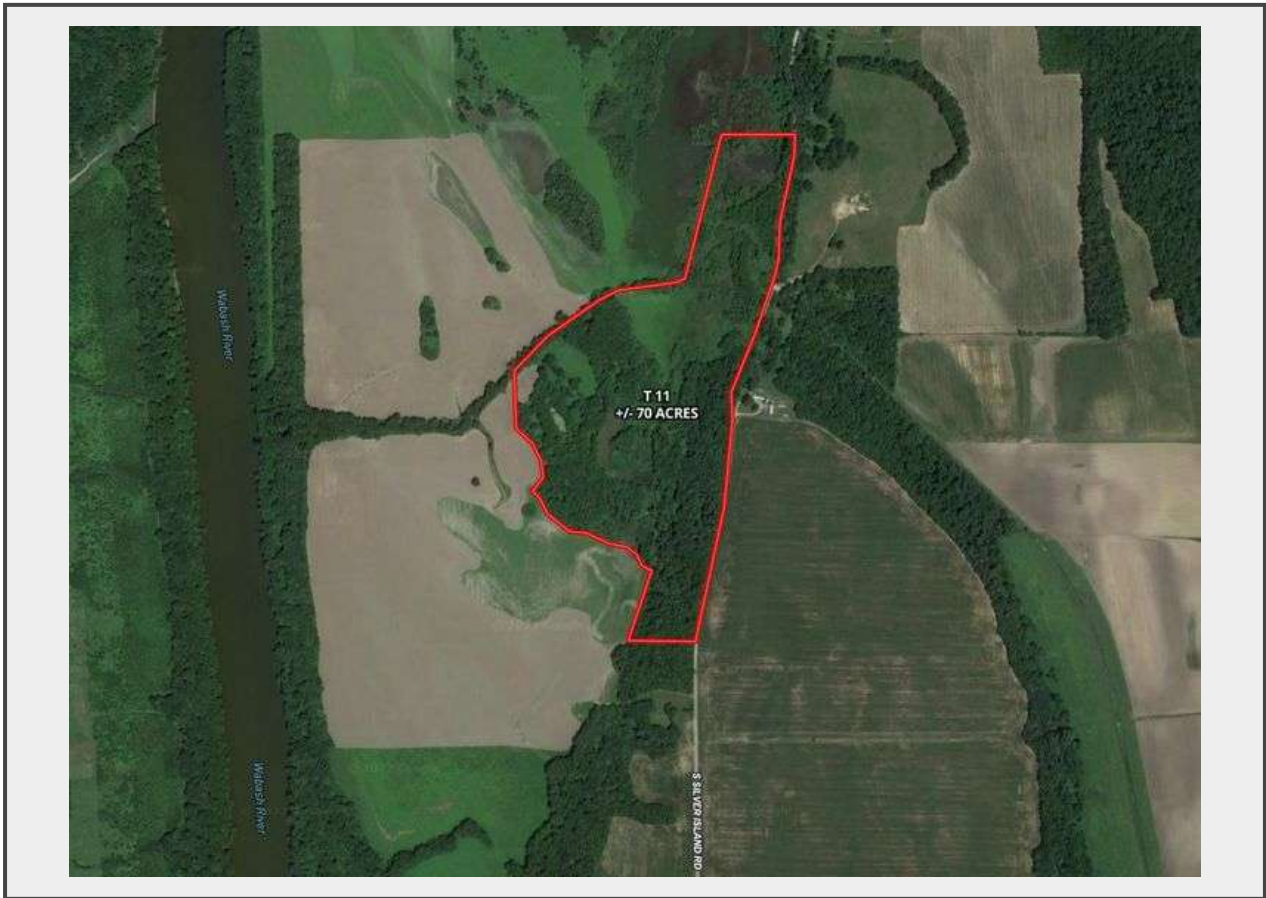


Sale Name: 1,006 Acres offered in 13 tracts, Fountain and Vermillion County, IN

LOT 11 - T11 +/- 70.669 Acres



Description

T11: +/- 70.669 SURVEYED ACRES; +/- 21.83 acres effective cropland, +/- 48.17 acres woods, brush and duck slew.

Part of section 10 and 15, T18N-R9W Troy TWP. Fountain County, IN.

Split out of PIN# 23-14-10-300-001.000-004 and 23-14-15-100.001.000-004.

Quantity: 1



<https://bid.agexchange.com/>