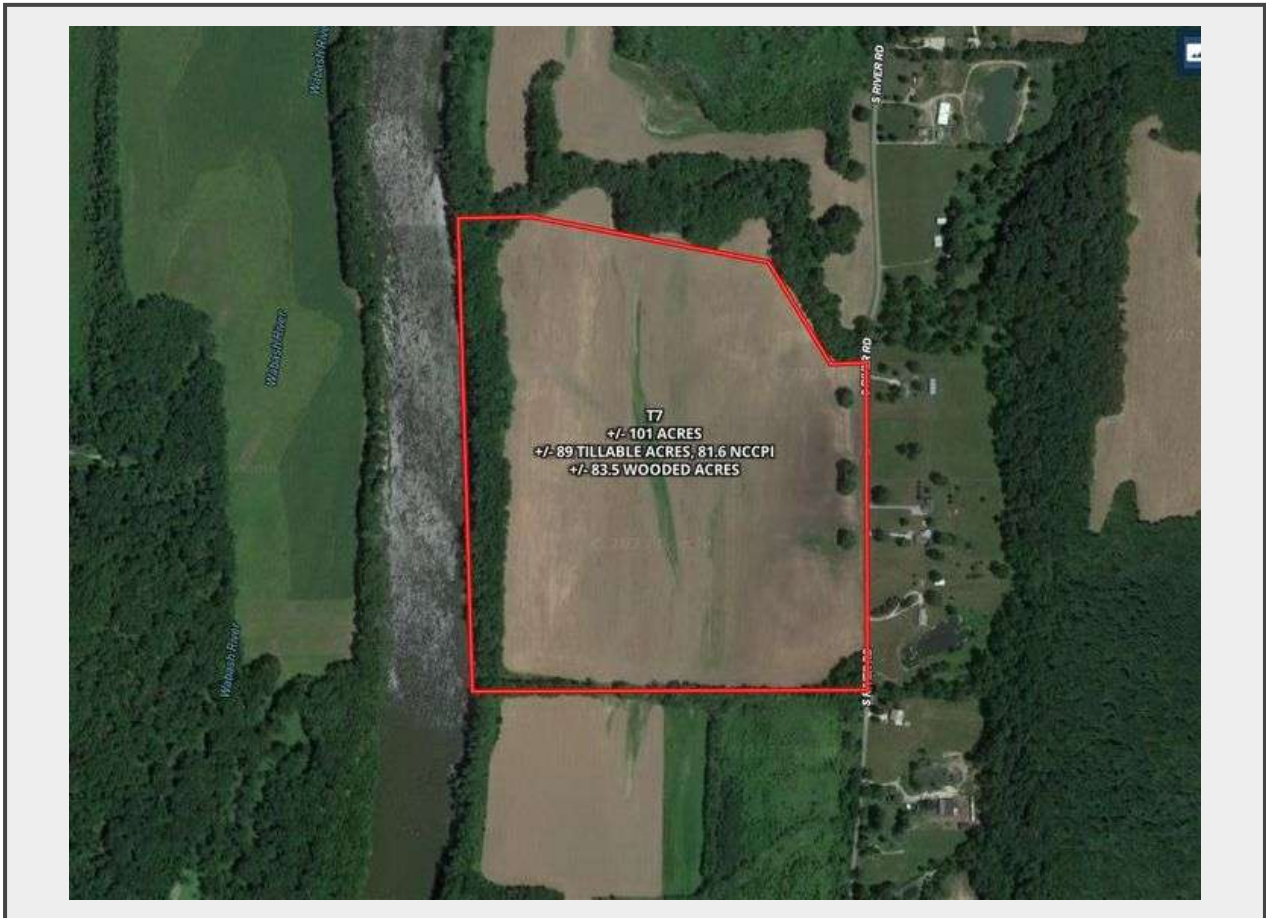


Sale Name: 1,006 Acres offered in 13 tracts, Fountain and Vermillion County, IN

LOT 7 - T7 +/- 100.017 Acres



Description

T7: +/- 100.017 SURVEYED ACRES; +/- 89 cropland acres, 81.6 NCCPI. +/- 11 wooded acres. .46 miles of Wabash River Frontage.

Part of section 2 and 11, T19N-R9W Troy TWP. Fountain County, IN.

PIN# 23-13-11-200-001.000-015; and a split out of PIN# 23-13-02-400-001.000-015.

Quantity: 1



<https://bid.agexchange.com/>