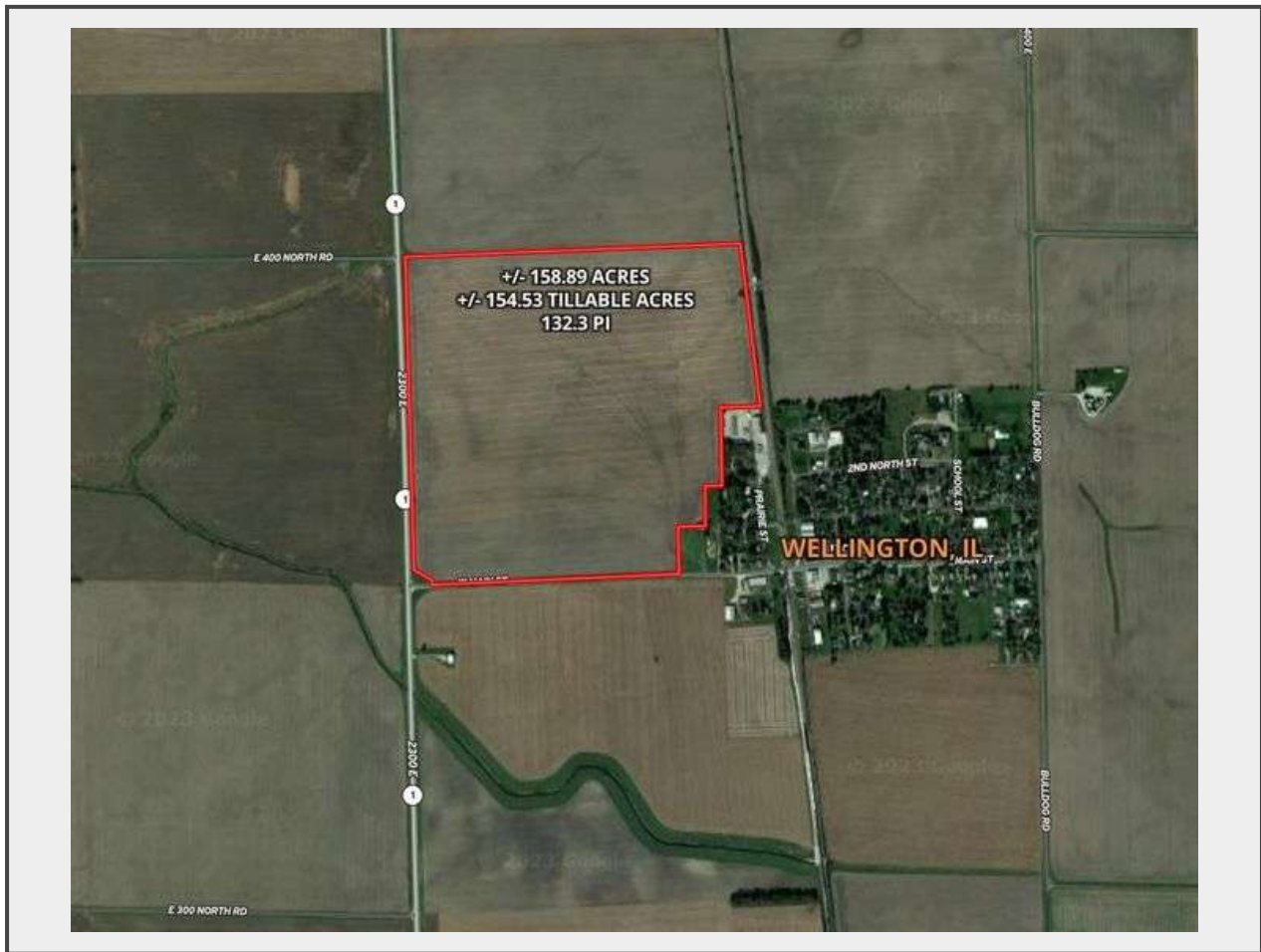


Sale Name: +/- 158.89 Acres, Lovejoy TWP. Iroquois County, IL.

LOT 1 - +/- 158.89 Acres



Description

+/- 158.89 acres consisting of 154.53 tillable acres, 132.3 PI
Highly productive Lisbond, Milford and Andres Soils.

Part of section 14, T24N R12W Lovejoy TWP. Iroquois County, IL.

Tax Parcel 40-14-100-005; 2022 Real Estate Tax payable 2023: \$6,011.00

Tax Parcel 40-14-201-001; 2022 Real Estate Tax payable 2023: \$ 157.62

2022 payable 2023 Real Estate Tax = \$6,168.62 = \$37.61 per acre.

Quantity: 1



<https://bid.agexchange.com/>