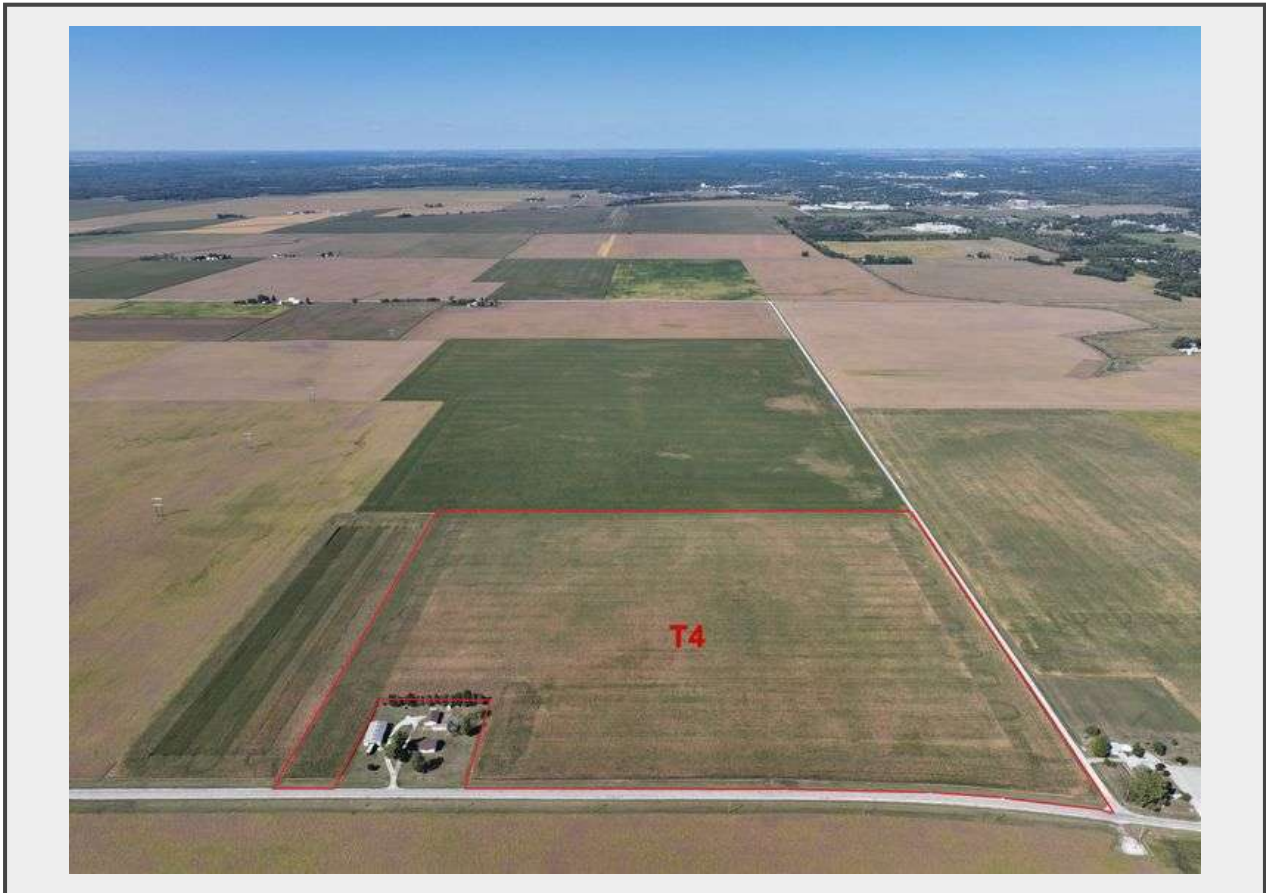


**Sale Name:** +/- 460.39 Acres offered in 5 tracts, Catlin Twp. Vermilion County, IL.  
Thursday, 10:00 AM, November 9th

**LOT 4 - T4**



**Description**

T4: +/- 48.22 Acres; 100% tillable tract, 144 PI  
Part of section 1, T18N- R12W Catlin TWP. Vermilion County, IL.  
PIN# 27-01-400-010 (09.22A); tax = \$ 615.56  
PIN# 27-01-400-007 (39.00A); tax = \$2,526.24  
2022 payable 2023 Real Estate Tax Total = \$3,141.80 = \$65.15 per acre.

**Quantity: 1**



<https://bid.agexchange.com/>